

PAA049Ra01

Polyclonal Antibody to Interferon Gamma (IFN γ)

Organism Species: Rattus norvegicus (Rat)

Instruction manual

FOR IN VITRO USE AND RESEARCH USE ONLY
NOT FOR USE IN CLINICAL DIAGNOSTIC PROCEDURES

[**PRODUCT INFORMATION**]

Immunogen: IFN γ , Rat

Clonality: Polyclonal

Host: Rabbit

Immunoglobulin Type: IgG

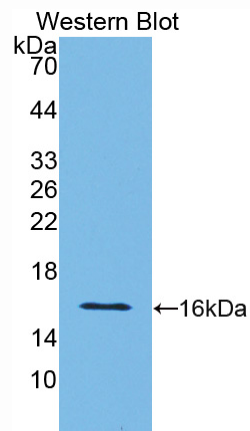
Purification: Affinity Chromatography.

Applications: WB, ICC, IHC-P, IHC-F, ELISA

Concentration: 200 μ g/mL

UOM: 100 μ g

9th Edition (Revised in Jul, 2013)



Sample: Recombinant IFN γ , Rat

[**IMMUNOGEN INFORMATION**]

Immunogen: Recombinant IFN γ (Gln23~Cys156) expressed in *E. coli*.

Accession No.: RPA049Ra01

Sequence: The target protein is fused with N-terminal His-Tag and its sequence is listed below.

MGHHHHHHSGSEF- QGTLIESL ESLKNYFNSS SMDAMEGKSL LLDIWRNWQK
DGNTKILESQ IISFYLRLE VLKDNQAISN NISVIESHLI TNFFSNSKAK KDAFMSIAKF
EVNPNQIQHK AVNELIRVIH QLSPESSLRK RKRSRC

[ANTIBODY SPECIFICITY]

The antibody is a rabbit polyclonal antibody raised against IFN γ . It has been selected for its ability to recognize IFN γ in immunohistochemical staining and western blotting.

[APPLICATIONS]

Western blotting: 1:50-400

Immunocytochemistry in formalin fixed cells: 1:50-500

Immunohistochemistry in formalin fixed frozen section: 1:50-500

Immunohistochemistry in paraffin section: 1:10-100

Enzyme-linked Immunosorbent Assay: 1:100-200

Optimal working dilutions must be determined by end user.

[CONTENTS]

Form & Buffer: Supplied as solution form in PBS, pH7.4, containing 0.02% NaN $_3$, 50% glycerol.

[STORAGE]

Store at 4°C for frequent use. Stored at -20°C to -80°C in a manual defrost freezer for one year without detectable loss of activity. Avoid repeated freeze-thaw cycles.