

PAA040Hu02

Polyclonal Antibody to Chemokine C-X3-C-Motif Ligand 1 (CX3CL1)**Organism Species: Homo sapiens (Human)*****Instruction manual***

FOR IN VITRO USE AND RESEARCH USE ONLY

NOT FOR USE IN CLINICAL DIAGNOSTIC PROCEDURES

9th Edition (Revised in Jul, 2013)

[PRODUCT INFORMATION]**Immunogen:** CX3CL1, Human**Clonality:** Polyclonal**Host:** Rabbit**Immunoglobulin Type:** IgG**Purification:** Affinity Chromatography.**Applications:** WB, ICC, IHC-P, IHC-F, ELISA**Concentration:** 200µg/mL**UOM:** 100µg**[IMMUNOGEN INFORMATION]****Immunogen:** Recombinant CX3CL1 (Gln25~Pro332) expressed in *E.coli*.**Accession No.:** RPA040Hu02**Sequence:** The target protein is fused with two N-terminal Tags, His-tag and T7-tag and its sequence is listed below.

MGSSHHHHHH SSGLVPRGSH MASMTGGQQM GRGSEF-QHHGVT KCNITCSKMT
SKIPVALLIH YQQNQASC GK RAIILETRQH RLFCADPKEQ WVKDAMQHL D RQAAALTRNG
GTFEKQIGEV KPRTPPAAGG MDESVVLEPE ATGESSSLEP TPSSQEAQRA LGTSP ELP TG
VTGSSGTRLP PTPKAQDGGP VGTELFRVPP VSTAATWQSS APHQPGPSLW AEAKTSEAPS
TQDPSTQAST ASSPAPEENA PSEGQRVWGQ GQSPRPENSL EREEMGPVPA
HTDAFQDWGP GSMAHVSVVP VSSEGTPSRE PVASGSWTPK AEEPIHATMD PQRLGVLITP
VP

[ANTIBODY SPECIFICITY]

The antibody is a rabbit polyclonal antibody raised against CX3CL1. It has been selected for its ability to recognize CX3CL1 in immunohistochemical staining and western blotting.

[APPLICATIONS]

Western blotting: 1:100-400

Immunocytochemistry in formalin fixed cells: 1:100-500

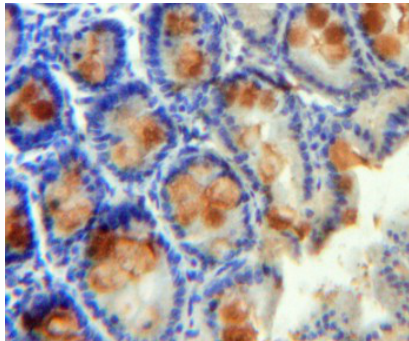
Immunohistochemistry in formalin fixed frozen section: 1:100-500

Immunohistochemistry in paraffin section: 1:50-200

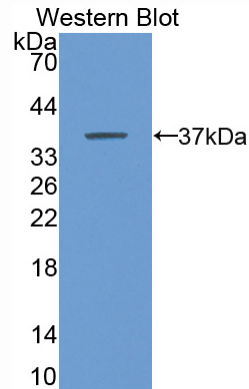
Enzyme-linked Immunosorbent Assay: 1:100-200

Optimal working dilutions must be determined by end user.

[**IMAGES**]



Used in DAB staining on formalin fixed
paraffin-embedded Intestine tissue



Used in Western Blot, Sample:
Recombinant CX3CL1, Human

[**CONTENTS**]

Form & Buffer: Supplied as solution form in PBS, pH7.4, containing 0.02% NaN_3 , 50% glycerol.

[**QUALITY CONTROL**]

Content: The quality control contains recombinant CX3CL1 (Gln25~Pro332) disposed in loading buffer.

Usage: 10uL per well when 3,3'-Diaminobenzidine(DAB) as the substrate.
5uL per well when used in enhanced chemiluminescent (ECL).

Note: The quality control is specifically manufactured as the positive control. Not used for other purposes.

Loading Buffer: 100mM Tris(pH8.8), 2% SDS, 200mM NaCl, 50% glycerol, BPB 0.01%, NaN_3 0.02%.

[**STORAGE**]

Store at 4°C for frequent use. Stored at -20°C to -80°C in a manual defrost freezer for one year without detectable loss of activity. Avoid repeated freeze-thaw cycles.