

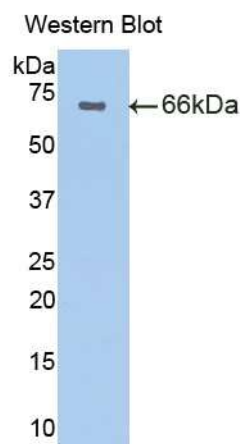
A90017Ra03
Polyclonal Antibody to Cadherin, Epithelial (CDHE)
Instruction manual

FOR IN VITRO USE AND RESEARCH USE ONLY
 NOT FOR USE IN CLINICAL DIAGNOSTIC PROCEDURES

5th Edition (Revised in January, 2013)

[PRODUCT INFORMATION]




Immunogen: CDHE
Clonality: Polyclonal
Host: Rabbit
Species Reactivity: Rat
Ig type: Rabbit IgG
Purification: Antibodies are purified by target protein affinity chromatography.
Applications: WB, ICC, IHC-P, IHC-F
Form: Liquid
Size: 100µg



Sample: Recombinant rat CDHE

[IMMUNOGEN INFORMATION]

Immunogen: Recombinant rat CDHE (Arg155~Leu709) expressed in *E.coli*.
Molecular Weight: 63.5kDa
USCN accession No.: P90017Ra03
Sequence: The target protein is fused with N-terminal His-Tag and its sequence is listed below.

MGHHHHHSGSEFELRRQ-RQKRDW VIPPINCPEN QKGEFPQRLV QIKSNRDKET
 TVFYSITGPG ADKPPVGVFI IERETGWLKV TQPLDREAD KYLLYSHAVS SNGEAVEDPM
 EIVVTVDQN DNRPEFIQEV FEGSVAEGAL PGTSVMQVSA TDADDDINTY NAAIAYTILS
 QDPELPHKNM FTVNRDTGVI SVTSGLDRE SYPTYTLVVQ AADLQGEGLS TTAKAVITVK
 DINDNAPIFN PSTYQGQVLE NEVGARIATL KVTDDDAPNT PAWNAVYTVV NDPDHFQFTVI
 TDPKTNEGIL KTAKGLDFEA KQQYILHVTV ENEEPFEGSL VPSTATVTV DVDVNEAPIF
 VPAEKRVEVP EDFGVGLEIA SYTAREPDTF MEQKITYRIW RDTANWLEIN PETGVISTR
Unique product Superb quality Client favorite Nicest service   

11271 Richmond Avenue, H104, Houston, TX 77082, USA | Toll free: 001-888-960-7402 | Fax: 001-832-538-0088 | Email: mail@uscnk.us | Http://www.uscnk.us
 Export Processing Zone, Wuhan 430056, P.R.China | Toll free: 0086-800-880-0687 | Fax: 0086-27-8425-9551 | Email: mail@uscnk.com | Http://www.uscnk.com

EMDREDSEHV KNSTYTALII ATDDGSPAT GTGTLLLVLS DVNDNAPIPE PRNMQFCQRN
PKPHVITILD PDLPPNTSPF TAEETHGASV NWTIEYNDAE QESLILQPRK DLEIGEYKIN
LKLSDNQNKD QVTTLEVHVC DCEGTVNNCM KAISLEAGL

[ANTIBODY SPECIFICITY]

Anti CDHE is a rabbit polyclonal antibody raised against rat CDHE. This antibody has been selected for its ability to recognize rat CDHE in immunohistochemical staining and western blotting, non cross-reactive with other members of the family.

[APPLICATIONS]

Western blotting: 1:100-400

Immunocytochemistry in formalin fixed cells: 1:100-500

Immunohistochemistry in formalin fixed frozen section: 1:100-500

Immunohistochemistry in paraffin section: 1:50-200

Optimal working dilutions must be determined by end user.

[CONTENTS]

Form & Buffer: Supplied as solution form in PBS, pH 7.4, containing 0.02%Na₃N, 50% glycerol.

[QUALITY CONTROL]

Content: The quality control contains recombinant rat CDHE (Arg155~Leu709) disposed in loading buffer.

Usage: 10uL per well when 3,3'-Diaminobenzidine(DAB) as the substrate.

5uL per well when used in enhanced chemiluminescent (ECL).

Note: The quality control is specifically manufactured as the positive control. Not used for other purposes.

Loading buffer: 100mM Tris(PH 8.8), 2%SDS, 200mM NaCl, 50% glycerol, BPB 0.01%, Na₃N 0.02%.

[STORAGE]

Store at 4°C for frequent use. Stored at -20°C to -80°C in a manual defrost freezer for one year without detectable loss of activity. Avoid repeated freeze-thaw cycles.

Unique product Superb quality Client favorite Nicest service  ISO9001:2008;  ISO13485:2003; 

11271 Richmond Avenue, H104, Houston, TX 77082, USA | Toll free: 001-888-960-7402 | Fax: 001-832-538-0088 | Email: mail@uscnk.us | Http://www.uscnk.us
Export Processing Zone, Wuhan 430056, P.R.China | Toll free: 0086-800-880-0687 | Fax: 0086-27-8425-9551 | Email: mail@uscnk.com | Http://www.uscnk.com