

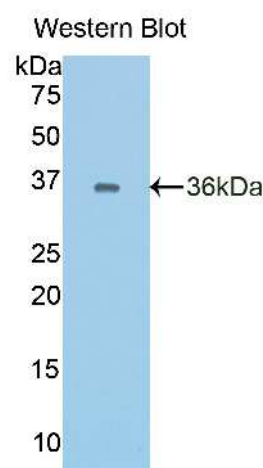
**A90017Ra02**  
**Polyclonal Antibody to Cadherin, Epithelial (CDHE)**  
**Instruction manual**

FOR IN VITRO USE AND RESEARCH USE ONLY  
 NOT FOR USE IN CLINICAL DIAGNOSTIC PROCEDURES

5th Edition (Revised in January, 2013)

**[ PRODUCT INFORMATION ]**

**Immunogen:** CDHE  
**Clonality:** Polyclonal  
**Host:** Rabbit  
**Species Reactivity:** Rat  
**Ig type:** Rabbit IgG  
**Purification:** Antibodies are purified by target protein affinity chromatography.  
**Applications:** WB, ICC, IHC-P, IHC-F  
**Form:** Liquid  
**Size:** 100µg



Sample: Recombinant rat CDHE

**[ IMMUNOGEN INFORMATION ]**

**Immunogen:** Recombinant rat CDHE (Asp374~Ser628) expressed in *E.coli*.  
**Molecular Weight:** 33.9kDa  
**USCN accession No.:** P90017Ra02  
**Sequence:** The target protein is fused with two N-terminal Tags, His-tag and S-tag and its sequence is listed below.  
 MHHHHHHSSG LVPRGSGMKE TAAKFERQH MDSPDLGTDD DDKAMADIGS EF-DNAPIFN  
 PSTYQGQVLE NEVGARIATL KVTDDAPNT PAWNAVYTVV NDPDHQFTVI TDPKTNEGIL  
 KTAKGLDFEA KQQYILHVTV ENEEPFEGSL VPSTATVTVD VVDVNEAPIF VPAEKRVEVP  
 EDFGVGLEIA SYTAREPDTF MEQKITYRIW RDTANWLEIN PETGVISTRA EMDREDSEHV

*Unique product Superb quality Client favorite Nicest service*  **ISO9001:2008**;  **ISO13485:2003**; 

11271 Richmond Avenue, H104, Houston, TX 77082, USA | Toll free: 001-888-960-7402 | Fax: 001-832-538-0088 | Email: mail@uscnk.us | Http://www.uscnk.us  
 Export Processing Zone, Wuhan 430056, P.R.China | Toll free: 0086-800-880-0687 | Fax: 0086-27-8425-9551 | Email: mail@uscnk.com | Http://www.uscnk.com

KNSTYTALII ATDDGSPAT GTGTLLLVLS DVNDNAPIPE PRNMQFCQRN PKPHVITILD  
PDLPPNTS

### **[ ANTIBODY SPECIFICITY ]**

Anti CDHE is a rabbit polyclonal antibody raised against rat CDHE. This antibody has been selected for its ability to recognize rat CDHE in immunohistochemical staining and western blotting, non cross-reactive with other members of the family.

### **[ APPLICATIONS ]**

Western blotting: 1:100-400

Immunocytochemistry in formalin fixed cells: 1:100-500

Immunohistochemistry in formalin fixed frozen section: 1:100-500

Immunohistochemistry in paraffin section: 1:50-200

Optimal working dilutions must be determined by end user.

### **[ CONTENTS ]**

**Form & Buffer:** Supplied as solution form in PBS, pH 7.4, containing 0.02%Na<sub>3</sub>N, 50% glycerol.

### **[ QUALITY CONTROL ]**

**Content:** The quality control contains recombinant rat CDHE (Asp374~Ser628) disposed in loading buffer.

**Usage:** 10uL per well when 3,3'-Diaminobenzidine(DAB) as the substrate.

5uL per well when used in enhanced chemilumescence (ECL).

**Note:** The quality control is specifically manufactured as the positive control. Not used for other purposes.

**Loading buffer:** 100mM Tris(PH 8.8), 2%SDS, 200mM NaCl, 50% glycerol, BPB 0.01%, Na<sub>3</sub>N 0.02%.

### **[ STORAGE ]**

Store at 4°C for frequent use. Stored at -20°C to -80°C in a manual defrost freezer for one year without detectable loss of activity. Avoid repeated freeze-thaw cycles.

*Unique product Superb quality Client favorite Nicest service*  ISO9001:2008;  ISO13485:2003; 

11271 Richmond Avenue, H104, Houston, TX 77082, USA | Toll free: 001-888-960-7402 | Fax: 001-832-538-0088 | Email: mail@uscnk.us | Http://www.uscnk.us  
Export Processing Zone, Wuhan 430056, P.R.China | Toll free: 0086-800-880-0687 | Fax: 0086-27-8425-9551 | Email: mail@uscnk.com | Http://www.uscnk.com