

PAA010Ra01**Polyclonal Antibody to Connective Tissue Growth Factor (CTGF)****Organism Species: Rattus norvegicus (Rat)****Instruction manual**

FOR IN VITRO USE AND RESEARCH USE ONLY

NOT FOR USE IN CLINICAL DIAGNOSTIC PROCEDURES

9th Edition (Revised in Jul, 2013)

[PRODUCT INFORMATION]**Immunogen:** CTGF, Rat**Clonality:** Polyclonal**Host:** Rabbit**Immunoglobulin Type:** IgG**Purification:** Affinity Chromatography.**Applications:** WB, ICC, IHC-P, IHC-F, ELISA**Concentration:** 200µg/mL**UOM:** 100µg**[IMMUNOGEN INFORMATION]****Immunogen:** Recombinant CTGF (Gln25~Ala348) expressed in *E.coli*.**USCN Accession No.:** RPA010Ra01**Sequence:** The target protein is fused with N-terminal His-Tag and its sequence is listed below.

MGHHHHHHSSEF-QDCSAQ CQCAEEAAPR CPAGVSLVLD GCGCCRCAK
QLGELCTERD PCDPHKGLFC DFGSPANRKI GVCTAKDGAP CVFGGSVYRS GESFQSSCKY
QCTCLDGAVG CVPLCSMDVR LPSPDCPFPR RVKLPGKCCE EWVCDEPKDR
TVVGPALAAAYRLEDTFGPDP TMMRANCLVQ TTEWSACSKT CGMGISTRVT NDNTFCRLEK
QSRLCMVRPC EADLEENIKK GKKCIRTPKI AKPVKFELSG CTSVKTYRAK FCGVCTDGRG
CTPHRTTTL PVEFKCPDGEI MKKNMMFIKT CACHYNCPGD NDIFESLYYR KMYGDMA

[ANTIBODY SPECIFICITY]

The antibody is a rabbit polyclonal antibody raised against CTGF. It has been selected for its ability to recognize CTGF in immunohistochemical staining and western blotting.

[APPLICATIONS]

Western blotting: 1:100-400

Immunocytochemistry in formalin fixed cells: 1:100-500

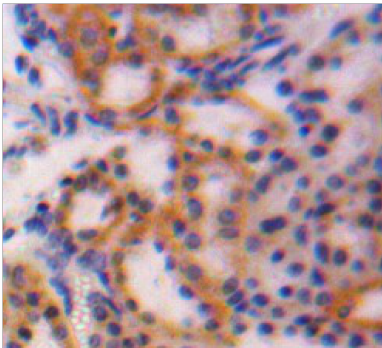
Immunohistochemistry in formalin fixed frozen section: 1:100-500

Immunohistochemistry in paraffin section: 1:50-200

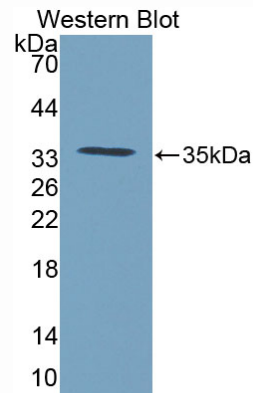
Enzyme-linked Immunosorbent Assay: 1:100-200

Optimal working dilutions must be determined by end user.

[IMAGES]



Used in DAB staining on formalin fixed
paraffin-embedded kidney tissue



Used in Western Blot, Sample:
Recombinant CTGF, Rat

[CONTENTS]

Form & Buffer: Supplied as solution form in PBS, pH7.4, containing 0.02% NaN₃, 50% glycerol.

[QUALITY CONTROL]

Content: The quality control contains recombinant CTGF (Gln25~Ala348) disposed in loading buffer.

Usage: 10uL per well when 3,3'-Diaminobenzidine(DAB) as the substrate.
5uL per well when used in enhanced chemiluminescent (ECL).

Note: The quality control is specifically manufactured as the positive control. Not used for other purposes.

Loading Buffer: 100mM Tris(pH8.8), 2% SDS, 200mM NaCl, 50% glycerol, BPB 0.01%, NaN₃ 0.02%.

[STORAGE]

Store at 4°C for frequent use. Stored at -20°C to -80°C in a manual defrost freezer for one year without detectable loss of activity. Avoid repeated freeze-thaw cycles.