

PAA002Mu01

Polyclonal Antibody to Activated Leukocyte Cell Adhesion Molecule (ALCAM)**Organism Species: Mus musculus (Mouse)****Instruction manual**

FOR IN VITRO USE AND RESEARCH USE ONLY

NOT FOR USE IN CLINICAL DIAGNOSTIC PROCEDURES

9th Edition (Revised in Jul, 2013)

[PRODUCT INFORMATION]**Immunogen:** ALCAM, Mouse**Clonality:** Polyclonal**Host:** Rabbit**Immunoglobulin Type:** IgG**Purification:** Affinity Chromatography.**Applications:** WB, ICC, IHC-P, IHC-F, ELISA**Concentration:** 200µg/mL**UOM:** 100µg**[IMMUNOGEN INFORMATION]****Immunogen:** Recombinant ALCAM (Trp28~Lys527) expressed in *E.coli*.**Accession No.:** RPA002Mu01**Sequence:** The target protein is fused with two N-terminal Tags, His-tag and T7-tag and its sequence is listed below.

MGSSHHHHHH SSSLVPRGSH MASMTGGQQM GRGSEF- WYT VNSAYGDTIV
MPCRLDVPQN LMFGKWYKYEK PDGSPVFI AF RSSTKKS VQY DDVPEYKDRL SLSENYTL SI
ANAKISDEKR FVCMLVTEDN VFEAPTLVKV FKQPSKPEIV NKAPFLET DQ LKKLGDCISR
DSYPDG NITW YRNGKVLQPV EGEVAILFKK EIDPGTQLYT VTSSLEYKTT RSDIQMPFTC
SVTYYGPSGQ KTIYSEQEIF DIYYPT EQVT IQVLPPKNAI KEGDNITLQC LGNGNPPPEE
FMFYLPQPE GIRSSNTYTL TDVRRNATGD YKCSLIDKRN MAASTTIVH YLDLSLNPSG
EVTKQIGDTL PVSCTISASR NATVVMKDN IRLRSSPSFS SLHYQDAGNY VCETALQEVE
GLKKRESLTL IVEGKPKQIKM TKKTDP SGLS KTIICHVEGF PKPAIHWITIT GSGSVINQTE
ESPYINGRYY SKIIISPEEN VTLTCTAENQ LERTVNSLNV SAISIPEHDE ADDISDENRE
KVNDQAK

[ANTIBODY SPECIFICITY]

The antibody is a rabbit polyclonal antibody raised against ALCAM. It has been selected for its ability to recognize ALCAM in immunohistochemical staining and western blotting.

[APPLICATIONS]

Western blotting: 1:100-400

Immunocytochemistry in formalin fixed cells: 1:100-500

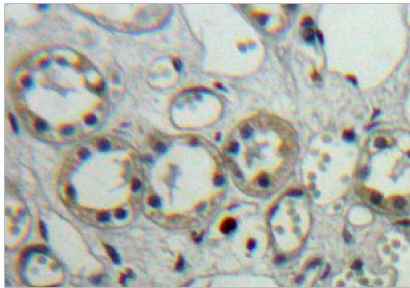
Immunohistochemistry in formalin fixed frozen section: 1:100-500

Immunohistochemistry in paraffin section: 1:50-200

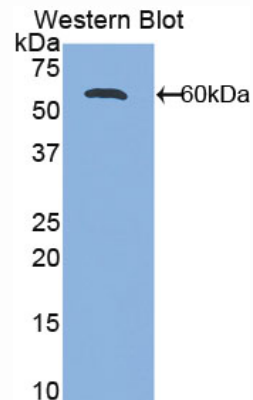
Enzyme-linked Immunosorbent Assay: 1:100-200

Optimal working dilutions must be determined by end user.

[IMAGES]



Used in DAB staining on formalin fixed
paraffin-embedded kidney tissue



Used in Western Blot, Sample:
Recombinant ALCAM, Mouse

[CONTENTS]

Form & Buffer: Supplied as solution form in PBS, pH7.4, containing 0.02% NaN_3 , 50% glycerol.

[QUALITY CONTROL]

Content: The quality control contains recombinant ALCAM (Trp28~Lys527) dissolved in loading buffer.

Usage: 10uL per well when 3,3'-Diaminobenzidine(DAB) as the substrate.
5uL per well when used in enhanced chemiluminescent (ECL).

Note: The quality control is specifically manufactured as the positive control. Not used for other purposes.

Loading Buffer: 100mM Tris(pH8.8), 2% SDS, 200mM NaCl, 50% glycerol, BPB 0.01%, NaN_3 0.02%.

[STORAGE]

Store at 4°C for frequent use. Stored at -20°C to -80°C in a manual defrost freezer for one year without detectable loss of activity. Avoid repeated freeze-thaw cycles.