

MAL926Hu21**Monoclonal Antibody to Semaphorin 5B (SEMA5B)****Organism Species: Homo sapiens (Human)*****Instruction manual***

FOR IN VITRO USE AND RESEARCH USE ONLY

NOT FOR USE IN CLINICAL DIAGNOSTIC PROCEDURES

10th Edition (Revised in Jan, 2014)

[PRODUCT INFORMATION]**Immunogen:** SEMA5B, Human**Clonality:** Monoclonal**Clone number:** A3**Host:** Mouse**Immunoglobulin Type:** IgG1 Kappa**Purification:** Affinity Chromatography.**Applications:** WB, ICC, IHC-P, IHC-F, ELISA**Concentration:** 500µg/mL**UOM:** 200µg**[IMMUNOGEN INFORMATION]****Immunogen:** Recombinant SEMA5B (Gly350~Pro602) with N-terminal His-Tag expressed in *E.coli*.**Accession No.:** RPL926Hu02**[ANTIBODY SPECIFICITY]**

The antibody is a mouse monoclonal antibody raised against SEMA5B. It has been selected for its ability to recognize SEMA5B in immunohistochemical staining and western blotting.

[APPLICATIONS]

Western blotting: 1:100-400

Immunocytochemistry in formalin fixed cells: 1:100-500

Immunohistochemistry in formalin fixed frozen section: 1:100-500

Immunohistochemistry in paraffin section: 1:50-200

Enzyme-linked Immunosorbent Assay: 1:100-200

Optimal working dilutions must be determined by end user.

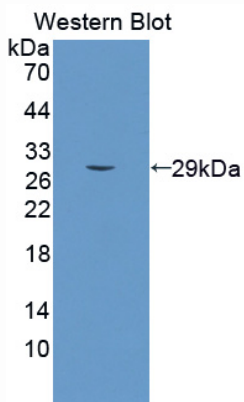
[**CONTENTS**]

Form & Buffer: Supplied as solution form in PBS, pH7.4, containing 0.02% NaN₃, 50% glycerol.

[**STORAGE**]

Store at 4°C for frequent use. Stored at -20°C to -80°C in a manual defrost freezer for one year without detectable loss of activity. Avoid repeated freeze-thaw cycles.

[**IMAGES**]



**Used in Western Blot, Sample:
Recombinant SEMA5B, Human**