

MAL763Hu21

Monoclonal Antibody to Myxovirus Resistance 1 (MX1)

Organism Species: Homo sapiens (Human)

Instruction manual

FOR IN VITRO USE AND RESEARCH USE ONLY
NOT FOR USE IN CLINICAL DIAGNOSTIC PROCEDURES

9th Edition (Revised in Jul, 2013)

[PRODUCT INFORMATION]

Immunogen: MX1, Human

Clonality: Monoclonal

Clone number: C6

Host: Mouse

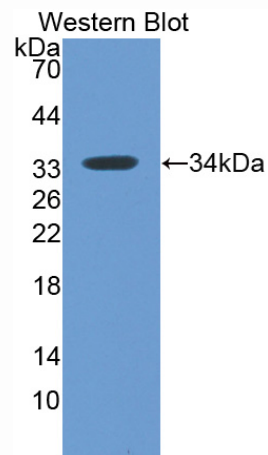
Immunoglobulin Type: IgG

Purification: Affinity Chromatography.

Applications: WB, ICC, IHC-P, IHC-F, ELISA

Concentration: 500µg/mL

UOM: 200µg



Sample: Recombinant MX1, Human

[IMMUNOGEN INFORMATION]

Immunogen: Recombinant MX1 (Ser80~Leu342) expressed in *E. coli*.

Accession No.: RPL763Hu01

Sequence: The target protein is fused with N-terminal His-Tag and its sequence is listed below.

MGHHHHHHS~~G~~SEF-S SGKSSVLEAL SGVALPRGSG IVTRCPLVLK LKKLVNEDKW
RGKVS~~Y~~QDYE IEISDASEVE KEINKAQNAI AGE~~G~~MGISHE LIT~~L~~ISSRD VPD~~L~~T~~L~~IDLP
GITR~~V~~AVGNQ PADIGYKIKT LIKKYIQRQE TISL~~V~~VVPSN VDIATTEALS MAQEVDPEGD
RTIGILTKPD LVDKGTEDKV VD~~V~~VRNLVFH LKKG~~Y~~MIVKC RGQ~~Q~~EIQDQL SLSEALQREK
IFFENHPYFR DLLEEGKATV PCLAEKLTSE LITHICKSLP LL

[ANTIBODY SPECIFICITY]

The antibody is a mouse monoclonal antibody raised against MX1. It has been selected for its ability to recognize MX1 in immunohistochemical staining and western blotting.

[APPLICATIONS]

Western blotting: 1:100-400

Immunocytochemistry in formalin fixed cells: 1:100-500

Immunohistochemistry in formalin fixed frozen section: 1:100-500

Immunohistochemistry in paraffin section: 1:50-200

Enzyme-linked Immunosorbent Assay: 1:100-200

Optimal working dilutions must be determined by end user.

[CONTENTS]

Form & Buffer: Supplied as solution form in PBS, pH7.4, containing 0.02% NaN₃, 50% glycerol.

[STORAGE]

Store at 4°C for frequent use. Stored at -20°C to -80°C in a manual defrost freezer for one year without detectable loss of activity. Avoid repeated freeze-thaw cycles.