

**MAL376Hu22**

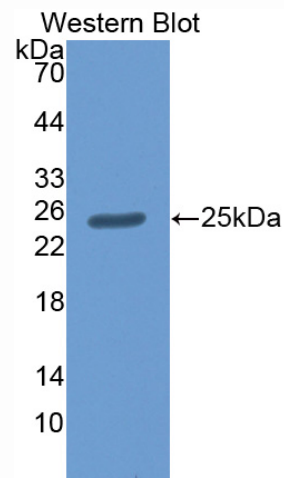
**Monoclonal Antibody to CASP2 And RIPK1 Domain  
Containing Adaptor With Death Domain Protein (CRADD)  
Organism Species: Homo sapiens (Human)  
Instruction manual**

FOR IN VITRO USE AND RESEARCH USE ONLY  
NOT FOR USE IN CLINICAL DIAGNOSTIC PROCEDURES

9th Edition (Revised in Jul, 2013)

**[ PRODUCT INFORMATION ]**

**Immunogen:** CRADD, Human  
**Clonality:** Monoclonal  
**Clone number:** F6  
**Host:** Mouse  
**Immunoglobulin Type:** IgG  
**Purification:** Affinity Chromatography.  
**Applications:** WB, ICC, IHC-P, IHC-F, ELISA  
**Concentration:** 500µg/mL  
**UOM:** 200µg



Sample: Recombinant CRADD, Human

**[ IMMUNOGEN INFORMATION ]**

**Immunogen:** Recombinant CRADD (Met1~Glu199) expressed in *E.coli*.  
**Accession No.:** RPL376Hu01  
**Sequence:** The target protein is fused with N-terminal His-Tag and its sequence is listed below.  
MGHHHHHHSGSEF-MEARDKQVLR SLRLELGAEV LVEGLVLQYL YQEGILTENH  
IQEINAQTTG LRKTMLLLDI LPSRGPKAFD TFLDSLQEFW WREKLLKKAR EEAMTDLPAG  
DRLTGIPSHI LNSSPSDRQI NQLAQLRGPE WPEMVL SLGL SQTDIYRCKA NHPHNVQSQV  
VEAFIRWRQR FGKQATFQSL HNGLR AVEVD PSLLLHMLE

## **[ ANTIBODY SPECIFICITY ]**

The antibody is a mouse monoclonal antibody raised against CRADD. It has been selected for its ability to recognize CRADD in immunohistochemical staining and western blotting.

## **[ APPLICATIONS ]**

Western blotting: 1:100-400

Immunocytochemistry in formalin fixed cells: 1:100-500

Immunohistochemistry in formalin fixed frozen section: 1:100-500

Immunohistochemistry in paraffin section: 1:50-200

Enzyme-linked Immunosorbent Assay: 1:100-200

Optimal working dilutions must be determined by end user.

## **[ CONTENTS ]**

**Form & Buffer:** Supplied as solution form in PBS, pH7.4, containing 0.02% NaN<sub>3</sub>, 50% glycerol.

## **[ STORAGE ]**

Store at 4°C for frequent use. Stored at -20°C to -80°C in a manual defrost freezer for one year without detectable loss of activity. Avoid repeated freeze-thaw cycles.