

MAE787Ra21

Monoclonal Antibody to Annexin A1 (ANXA1)

Organism Species: Rattus norvegicus (Rat)

Instruction manual

FOR IN VITRO USE AND RESEARCH USE ONLY
NOT FOR USE IN CLINICAL DIAGNOSTIC PROCEDURES

[**PRODUCT INFORMATION**]

Immunogen: ANXA1, Rat

Clonality: Monoclonal

Clone number: F8

Host: Mouse

Immunoglobulin Type: IgG

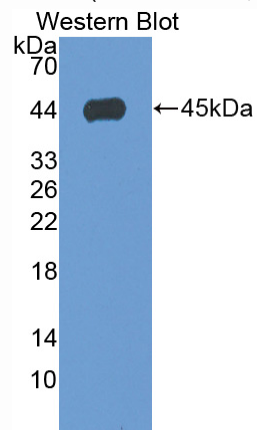
Purification: Affinity Chromatography.

Applications: WB, ICC, IHC-P, IHC-F, ELISA

Concentration: 500µg/mL

UOM: 200µg

9th Edition (Revised in Jul, 2013)



Sample: Recombinant ANXA1, Rat

[**IMMUNOGEN INFORMATION**]

Immunogen: Recombinant ANXA1 (Met1~Asn346) expressed in *E.coli*.

Accession No.: RPE787Ra01

Sequence: The target protein is fused with two N-terminal Tags, His-tag and S-tag and its sequence is listed below.

MHHHHHHSSG LVPRGSGMKE TAAKFERQH MDSPDLGTDD DDKAMADIGS-
MAMVSEFLKQ ACYIEKQEQE YVQAVKSYKG GPGSAVSPYP SFNPSSDVAALHKAIMVKGV
DEATIIDILT KRTNAQRQQI KAAYLQETGK PLDETLKKAL TGHLEEVVLA MLKTPAQFDA
DELRAAMKGL GTDEDLIEI LTTRSNNQIR EITRVYREEL KRDLAKDITS DTSGDFRNAL
LALAKGDRCE DMSVNQLDAL TDARALYEAG ERRKGTDVNV FNTILTTRSY PHLRKFVFNQY
RKYSQHDMNK ALDLELKGDI EKCLTTIVKC ATSTPAFFAE KLYEAMKGAG TRHKTLIRIM
VSRSEIDMNE IKVFYQKKYG IPLCQAILDE TKGDYEKILV ALCGGN

[ANTIBODY SPECIFICITY]

The antibody is a mouse monoclonal antibody raised against ANXA1. It has been selected for its ability to recognize ANXA1 in immunohistochemical staining and western blotting.

[APPLICATIONS]

Western blotting: 1:100-400

Immunocytochemistry in formalin fixed cells: 1:100-500

Immunohistochemistry in formalin fixed frozen section: 1:100-500

Immunohistochemistry in paraffin section: 1:50-200

Enzyme-linked Immunosorbent Assay: 1:100-200

Optimal working dilutions must be determined by end user.

[CONTENTS]

Form & Buffer: Supplied as solution form in PBS, pH7.4, containing 0.02% NaN₃, 50% glycerol.

[STORAGE]

Store at 4°C for frequent use. Stored at -20°C to -80°C in a manual defrost freezer for one year without detectable loss of activity. Avoid repeated freeze-thaw cycles.