

MAE219Hu22
Monoclonal Antibody
To Peptidyl Prolyl Cis/Trans Isomerase NIMA Interacting Protein 1 (PIN1)
Organism Species: Homo sapiens (Human)
Instruction manual

FOR IN VITRO USE AND RESEARCH USE ONLY
NOT FOR USE IN CLINICAL DIAGNOSTIC PROCEDURES

9th Edition (Revised in Jul, 2013)

[PRODUCT INFORMATION]

Immunogen: PIN1, Human

Clonality: Monoclonal

Clone number: G1

Host: Mouse

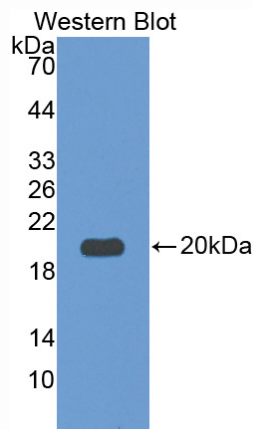
Immunoglobulin Type: IgG

Purification: Affinity Chromatography.

Applications: WB, ICC, IHC-P, IHC-F, ELISA

Concentration: 500µg/mL

UOM: 200µg



Sample: Recombinant PIN1, Human

[IMMUNOGEN INFORMATION]

Immunogen: Recombinant PIN1 (Ala2~Glu163) expressed in *E.coli*.

Accession No.: RPE219Hu01

Sequence: The target protein is fused with N-terminal His-Tag and its sequence is listed below.

MGHHHHHSGSEF- ADEEKLP PG WEKRMSRSSG RYYYFNHITN ASQWERPSGN
SSSGGKNGQG EPARVRC SHL LVKHSQSRRP SSWRQEKITR TKEEALELIN GYIQKIKSGE
EDFESLASQF SDCSSAKARG DLGAFSRGQM QKPFEDASFA LRTGEMSGPV FTDSGIHIL
RTE

[ANTIBODY SPECIFICITY]

The antibody is a mouse monoclonal antibody raised against PIN1. It has been selected for its ability to recognize PIN1 in immunohistochemical staining and western blotting.

[APPLICATIONS]

Western blotting: 1:100-400

Immunocytochemistry in formalin fixed cells: 1:100-500

Immunohistochemistry in formalin fixed frozen section: 1:100-500

Immunohistochemistry in paraffin section: 1:50-200

Enzyme-linked Immunosorbent Assay: 1:100-200

Optimal working dilutions must be determined by end user.

[CONTENTS]

Form & Buffer: Supplied as solution form in PBS, pH7.4, containing 0.02% NaN₃, 50% glycerol.

[STORAGE]

Store at 4°C for frequent use. Stored at -20°C to -80°C in a manual defrost freezer for one year without detectable loss of activity. Avoid repeated freeze-thaw cycles.