

MAD206Hu22**Monoclonal Antibody to Epstein Barr Virus Induced Protein 3 (EBI3)****Organism Species: Homo sapiens (Human)*****Instruction manual***

FOR IN VITRO USE AND RESEARCH USE ONLY

NOT FOR USE IN CLINICAL DIAGNOSTIC PROCEDURES

10th Edition (Revised in Jan, 2014)

[PRODUCT INFORMATION]**Immunogen:** EBI3, Human**Clonality:** Monoclonal**Clone number:** F6**Host:** Mouse**Immunoglobulin Type:** IgG1 kappa**Purification:** Affinity Chromatography.**Applications:** WB, ICC, IHC-P, IHC-F, ELISA**Concentration:** 500µg/mL**UOM:** 200µg**[IMMUNOGEN INFORMATION]****Immunogen:** Recombinant EBI3 (Arg21~Lys229) with N-terminal His-Tag expressed in *E.coli*.**Accession No.:** RPD206Hu01**[ANTIBODY SPECIFICITY]**

The antibody is a mouse monoclonal antibody raised against EBI3. It has been selected for its ability to recognize EBI3 in immunohistochemical staining and western blotting.

[APPLICATIONS]

Western blotting: 1:100-400

Immunocytochemistry in formalin fixed cells: 1:100-500

Immunohistochemistry in formalin fixed frozen section: 1:100-500

Immunohistochemistry in paraffin section: 1:50-200

Enzyme-linked Immunosorbent Assay: 1:100-200

Optimal working dilutions must be determined by end user.

[**CONTENTS**]

Form & Buffer: Supplied as solution form in PBS, pH7.4, containing 0.02% NaN₃, 50% glycerol.

[**STORAGE**]

Store at 4°C for frequent use. Stored at -20°C to -80°C in a manual defrost freezer for one year without detectable loss of activity. Avoid repeated freeze-thaw cycles.

[**QUALITY CONTROL**]

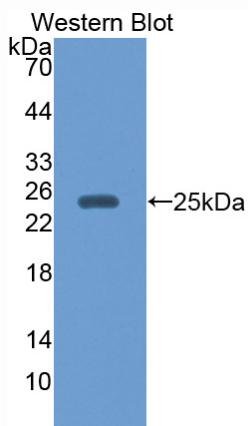
Content: The quality control contains recombinant EBI3 (Arg21~Lys229) disposed in loading buffer.

Usage: 10uL per well when 3,3'-Diaminobenzidine(DAB) as the substrate.
5uL per well when used in enhanced chemiluminescent (ECL).

Note: The quality control is specifically manufactured as the positive control. Not used for other purposes.

Loading Buffer: 100mM Tris(pH8.8), 2% SDS, 200mM NaCl, 50% glycerol, BPB 0.01%, NaN₃ 0.02%.

[**IMAGES**]



Used in Western Blot, Sample:

Recombinant EBI3, Human