

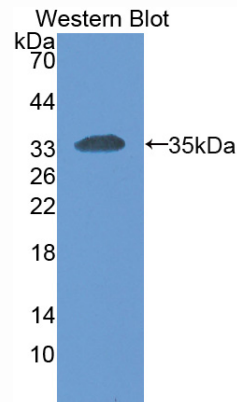
MAC977Hu22
Monoclonal Antibody
To Coactivator Associated Arginine Methyltransferase 1 (CARM1)
Organism Species: Homo sapiens (Human)
Instruction manual

FOR IN VITRO USE AND RESEARCH USE ONLY
NOT FOR USE IN CLINICAL DIAGNOSTIC PROCEDURES

9th Edition (Revised in Jul, 2013)

[PRODUCT INFORMATION]

Immunogen: CARM1, Human
Clonality: Monoclonal
Clone number: G4
Host: Mouse
Immunoglobulin Type: IgG
Purification: Affinity Chromatography.
Applications: WB, ICC, IHC-P, IHC-F, ELISA
Concentration: 500µg/mL
UOM: 200µg



Sample: Recombinant CARM1, Human

[IMMUNOGEN INFORMATION]

Immunogen: Recombinant CARM1 (Gln35~Glu320) expressed in *E.coli*.
Accession No.: RPC977Hu01
Sequence: The target protein is fused with N-terminal His-Tag and its sequence is listed below.

MGHHHHHHSGSEF- QLTTES MPFNVAEGKE VLLL VHNLPQ QLF GYSWYKG
ERVDG NRQIV GYAIGTQQAT PGPANSGRET IYPNASLLIQ NVTQNDTGFY TLQVIKSDLV
NEEATGQFHV YPELPKPSIS SNNSNPVEDK DAVAFTCEPE TQDTTYLWWI NNQSLPVS PR
LQLSNGNRTL TLLSVTRNDT GPYECEIQNP VSANRSDPVT LNVTYGPDTP TISPSDTYYR
PGANLSLS CY AASNPPAQYS WLINGTFQQS TQELFIPNIT VNNSGSYTCH ANNSVTGCNR
TTVKTIIVTE

[ANTIBODY SPECIFICITY]

The antibody is a mouse monoclonal antibody raised against CARM1. It has been selected for its ability to recognize CARM1 in immunohistochemical staining and western blotting.

[APPLICATIONS]

Western blotting: 1:100-400

Immunocytochemistry in formalin fixed cells: 1:100-500

Immunohistochemistry in formalin fixed frozen section: 1:100-500

Immunohistochemistry in paraffin section: 1:50-200

Enzyme-linked Immunosorbent Assay: 1:100-200

Optimal working dilutions must be determined by end user.

[CONTENTS]

Form & Buffer: Supplied as solution form in PBS, pH7.4, containing 0.02% NaN₃, 50% glycerol.

[STORAGE]

Store at 4°C for frequent use. Stored at -20°C to -80°C in a manual defrost freezer for one year without detectable loss of activity. Avoid repeated freeze-thaw cycles.