

MAC025Hu22

Monoclonal Antibody to Keratin 8 (KRT8)
Organism Species: Homo sapiens (Human)

Instruction manual

FOR IN VITRO USE AND RESEARCH USE ONLY
NOT FOR USE IN CLINICAL DIAGNOSTIC PROCEDURES

9th Edition (Revised in Jul, 2013)

[PRODUCT INFORMATION]

Immunogen: KRT8, Human

Clonality: Monoclonal

Clone number: C1

Host: Mouse

Immunoglobulin Type: IgG

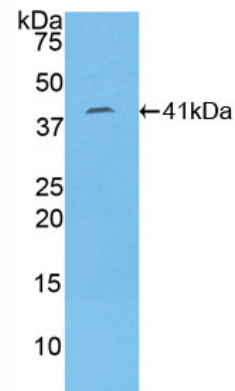
Purification: Affinity Chromatography.

Applications: WB, ICC, IHC-P, IHC-F, ELISA

Concentration: 500µg/mL

UOM: 200µg

Western Blot



Sample: Recombinant KRT8, Human

[IMMUNOGEN INFORMATION]

Immunogen: Recombinant KRT8 (Lys92~Lys393) expressed in *E.coli*.

Accession No.: RPC025Hu01

Sequence: The target protein is fused with two N-terminal Tags, His-tag and S-tag and its sequence is listed below.

MHHHHHHSSG LVPRGSGMKE TAAAKFERQH MDSPDLGTDD DDKAMADIGS EF-
KEQIKTLNN KFASFDKVR FLEQQNKMLE TKWSLLQQQK TARSNMDNMF ESYINNLRQK
LETLGQEKLK LEAELGNMQG LVEDFKNKYE DEINKRTEME NEFVLIKKDV DEAYMNKVEL
ESRLEGLTDE INFLRQLYEE EIRELQSQIS DTSVVLSDN SRSLDMSII AEVKAQYEDI
ANRSRAEAE MYQIKYEELQ SLAGKHGDDL RRTKTEISEM NRNISRLQAE IEGLKQGRAS
LEAAIADAEQ RGELAIKDAN AKLSELEAAL QRAKQDMARQ LREYQELMNK KLALDIEIAT
YRK

[ANTIBODY SPECIFICITY]

The antibody is a mouse monoclonal antibody raised against KRT8. It has been selected for its ability to recognize KRT8 in immunohistochemical staining and western blotting.

[APPLICATIONS]

Western blotting: 1:100-400

Immunocytochemistry in formalin fixed cells: 1:100-500

Immunohistochemistry in formalin fixed frozen section: 1:100-500

Immunohistochemistry in paraffin section: 1:50-200

Enzyme-linked Immunosorbent Assay: 1:100-200

Optimal working dilutions must be determined by end user.

[CONTENTS]

Form & Buffer: Supplied as solution form in PBS, pH7.4, containing 0.02% NaN₃, 50% glycerol.

[STORAGE]

Store at 4°C for frequent use. Stored at -20°C to -80°C in a manual defrost freezer for one year without detectable loss of activity. Avoid repeated freeze-thaw cycles.