

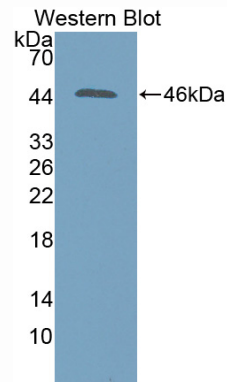
**MAB611Hu21**  
**Monoclonal Antibody to Neuraminidase (NEU)**  
**Organism Species: Homo sapiens (Human)**  
*Instruction manual*

FOR IN VITRO USE AND RESEARCH USE ONLY  
NOT FOR USE IN CLINICAL DIAGNOSTIC PROCEDURES

9th Edition (Revised in Jul, 2013)

**[ PRODUCT INFORMATION ]**

**Immunogen:** NEU, Human  
**Clonality:** Monoclonal  
**Clone number:** A10  
**Host:** Mouse  
**Immunoglobulin Type:** IgG  
**Purification:** Affinity Chromatography.  
**Applications:** WB, ICC, IHC-P, IHC-F, ELISA  
**Concentration:** 500µg/mL  
**UOM:** 200µg



*Sample: Recombinant NEU, Human*

**[ IMMUNOGEN INFORMATION ]**

**Immunogen:** Recombinant NEU (Ala47~Leu415) expressed in *E.coli*.  
**Accession No.:** RPB611Hu02  
**Sequence:** The target protein is fused with two N-terminal Tags, His-tag and S-tag and its sequence is listed below.  
MHHHHHHSSG LVPRGSGMKE TAAAKFERQH MDSPDLGTDD DDKAMADIGS EF- AEND  
FGLVQPLVTM EQLLWVSGRQ IGSVDTRIP LITATPRGTL LAFAEARKMS SSDEGAKFIA  
LRRSMDQGST WSPTAFIVND GDVPDGLNLG AVVSDVETGV VFLFYSLCAH  
KAGCQVASTM LVWSKDDGVS WSTPRNLSLD IGTEVFAPGP GSGIQKQREP  
RKGR LIVCGH GTLERDGVFC LLSDDHGASW RYGGVSGIP YGQPKQENDF  
NPDECQPYEL PDGSVINAR NQNNYHCHCR IVLRSYDACD TLRPRDVTFD PELVDPVVA  
GAVTSSGIV FFSNPAHPEF RVNLTLRWSF SNGTSWRKET VQLWPGPSGY SSLATLEGSM  
DGEEQAPQLY VLYEKGRNH YTESISVAKIS VYGTL

## **[ ANTIBODY SPECIFICITY ]**

The antibody is a mouse monoclonal antibody raised against NEU. It has been selected for its ability to recognize NEU in immunohistochemical staining and western blotting.

## **[ APPLICATIONS ]**

Western blotting: 1:100-400

Immunocytochemistry in formalin fixed cells: 1:100-500

Immunohistochemistry in formalin fixed frozen section: 1:100-500

Immunohistochemistry in paraffin section: 1:50-200

Enzyme-linked Immunosorbent Assay: 1:100-200

Optimal working dilutions must be determined by end user.

## **[ CONTENTS ]**

**Form & Buffer:** Supplied as solution form in PBS, pH7.4, containing 0.02%  $\text{NaN}_3$ , 50% glycerol.

## **[ STORAGE ]**

Store at 4°C for frequent use. Stored at -20°C to -80°C in a manual defrost freezer for one year without detectable loss of activity. Avoid repeated freeze-thaw cycles.