

**MAB336Rb21**

**Monoclonal Antibody to Protectin (CD59)**

**Organism Species: *Oryctolagus cuniculus* (Rabbit)**

***Instruction manual***

FOR IN VITRO USE AND RESEARCH USE ONLY  
NOT FOR USE IN CLINICAL DIAGNOSTIC PROCEDURES

9th Edition (Revised in Jul, 2013)

## [ **PRODUCT INFORMATION** ]

**Immunogen:** CD59, Rabbit

**Clonality:** Monoclonal

**Host:** Mouse

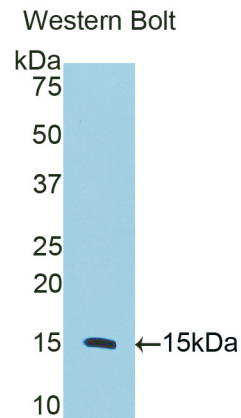
**Immunoglobulin Type:** IgG

**Purification:** Affinity Chromatography.

**Applications:** WB, ICC, IHC-P, IHC-F, ELISA

**Concentration:** 500µg/mL

**UOM:** 200µg



*Sample: Recombinant CD59, Rabbit*

## [ **IMMUNOGEN INFORMATION** ]

**Immunogen:** Recombinant CD59 (Ser25~Leu104) expressed in *E.coli*.

**USCN Accession No.:** RPB336Rb01

**Sequence:** The target protein is fused with two N-terminal Tags, His-tag and S-tag and its sequence is listed below.

MHHHHHSSG LVPRGSGMKE TAAKFERQH MDSPDLGTDD DDKAMADIGS EF-  
SLMCYH CLLPSPNCST VTNCTPNHDA CLTAVSGPRV YRQCWRYEDC NFEFISNRLE  
ENSLKYNCCR KDLCNGPEDD GTAL

## **[ ANTIBODY SPECIFICITY ]**

The antibody is a mouse monoclonal antibody raised against CD59. It has been selected for its ability to recognize CD59 in immunohistochemical staining and western blotting.

## **[ APPLICATIONS ]**

Western blotting: 1:100-400

Immunocytochemistry in formalin fixed cells: 1:100-500

Immunohistochemistry in formalin fixed frozen section: 1:100-500

Immunohistochemistry in paraffin section: 1:50-200

Enzyme-linked Immunosorbent Assay: 1:100-200

Optimal working dilutions must be determined by end user.

## **[ CONTENTS ]**

**Form & Buffer:** Supplied as solution form in PBS, pH7.4, containing 0.02% NaN<sub>3</sub>, 50% glycerol.

## **[ STORAGE ]**

Store at 4°C for frequent use. Stored at -20°C to -80°C in a manual defrost freezer for one year without detectable loss of activity. Avoid repeated freeze-thaw cycles.