

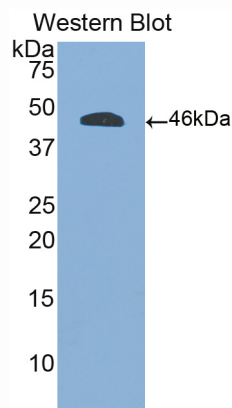
MAB030Hu22
Monoclonal Antibody
To Protein Tyrosine Phosphatase Receptor Type C (PTPRC)
Organism Species: Homo sapiens (Human)
Instruction manual

FOR IN VITRO USE AND RESEARCH USE ONLY
NOT FOR USE IN CLINICAL DIAGNOSTIC PROCEDURES

9th Edition (Revised in Jul, 2013)

[PRODUCT INFORMATION]

Immunogen: PTPRC, Human
Clonality: Monoclonal
Clone number: C2
Host: Mouse
Immunoglobulin Type: IgG
Purification: Affinity Chromatography.
Applications: WB, ICC, IHC-P, IHC-F, ELISA
Concentration: 500µg/mL
UOM: 200µg



Sample: Recombinant PTPRC, Human

[IMMUNOGEN INFORMATION]

Immunogen: Recombinant PTPRC (Asp193~Lys575) expressed in *E.coli*.
Accession No.: RPB030Hu01
Sequence: The target protein is fused with N-terminal His-Tag and its sequence is listed below.

MGHHHHHSGSEF-DAYLNASE TTTLSPSGSA VISTTTIATT PSKPTCDEKY ANITVDYLYN
KETKLFTAKL NVNENVECGN NTCTNNEVHN LTECKNASVS ISHNSCTAPD KTLILDVPPG
VEKFQLHDCT QVEKADTTIC LKWKNIFTFT CDTQNITYRF QCGNMIFDNK EIKLENLEPE
HEYKCDSEIL YNNHKFTNAS KIIKTDGFGSP GEPQIIFCRS EAAHQGVITW NPPQRSFHNF
TLCYIKETEK DCLNLDKNLI KYDLQNLKPY TKYVLSLHAY IIAKVQRNGS AAMCHFTTKS
APPSQVWNMT VSMTSDNSMH VKCRPPRDRN GIPHERYHLEV EAGNTLVRNE
SHKNCDFRVK DLQYSTDYTF KAYFHNGDYP GEPFILHHST SYNSK

[ANTIBODY SPECIFICITY]

The antibody is a mouse monoclonal antibody raised against PTPRC. It has been selected for its ability to recognize PTPRC in immunohistochemical staining and western blotting.

[APPLICATIONS]

Western blotting: 1:100-400

Immunocytochemistry in formalin fixed cells: 1:100-500

Immunohistochemistry in formalin fixed frozen section: 1:100-500

Immunohistochemistry in paraffin section: 1:50-200

Enzyme-linked Immunosorbent Assay: 1:100-200

Optimal working dilutions must be determined by end user.

[CONTENTS]

Form & Buffer: Supplied as solution form in PBS, pH7.4, containing 0.02% NaN₃, 50% glycerol.

[STORAGE]

Store at 4°C for frequent use. Stored at -20°C to -80°C in a manual defrost freezer for one year without detectable loss of activity. Avoid repeated freeze-thaw cycles.