

MAA537Hu22

Monoclonal Antibody to Enolase, Neuron Specific (NSE)

Organism Species: Homo sapiens (Human)

Instruction manual

FOR IN VITRO USE AND RESEARCH USE ONLY
NOT FOR USE IN CLINICAL DIAGNOSTIC PROCEDURES

9th Edition (Revised in Jul, 2013)

[PRODUCT INFORMATION]

Immunogen: NSE, Human

Clonality: Monoclonal

Clone number: F7

Host: Mouse

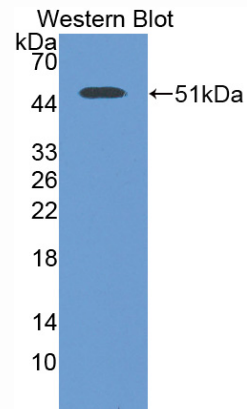
Immunoglobulin Type: IgG

Purification: Affinity Chromatography.

Applications: WB, ICC, IHC-P, IHC-F, ELISA

Concentration: 500µg/mL

UOM: 200µg



Sample: Recombinant NSE, Human

[IMMUNOGEN INFORMATION]

Immunogen: Recombinant NSE (Met1~Leu434) expressed in *E.coli*.

Accession No.: RPA537Hu01

Sequence: The target protein is fused with N-terminal His-Tag and its sequence is listed below.

MGHHHHHHHSGSEF-MSIEKIWARE ILDSRGNPTV EVDLYTAKGL FRAAVPSGAS
TGIYEALELR DGDQRYLGK GVLKAVDHIN STIAPALISS GLSVVEQEKL DNLMLELDGT
ENKSKFGANA ILGVSLAVCK AGAAERELPL YRHIAQLAGN SDLILPVPF NVINGGSHAG
NKLAMQEFMI LPVGAESFRD AMRLGAEVYH TLKGVIKDKY GKDATNVGDE GGFAPNILEN
SEALELVKEA IDKAGYTEKI VIGMDVAASE FYRDGKYDLD FKSPTDPSRY ITGDQLGALY
QDFVRDYPVV SIEDPFDQDD WAAWSKFTAN VGIQIVGDDL TVTNPKRIER AVEEKACNCL
LLKVNQIGSV TEAIQACKLA QENGWGVMVS HRSGETEDTF IADLVVGLCT GQIKTGAPCR
SERLAKYNQL MRIEEELGDE ARFAGHNFRN PSVL

[ANTIBODY SPECIFICITY]

The antibody is a mouse monoclonal antibody raised against NSE. It has been selected for its ability to recognize NSE in immunohistochemical staining and western blotting.

[APPLICATIONS]

Western blotting: 1:100-400

Immunocytochemistry in formalin fixed cells: 1:100-500

Immunohistochemistry in formalin fixed frozen section: 1:100-500

Immunohistochemistry in paraffin section: 1:50-200

Enzyme-linked Immunosorbent Assay: 1:100-200

Optimal working dilutions must be determined by end user.

[CONTENTS]

Form & Buffer: Supplied as solution form in PBS, pH7.4, containing 0.02% NaN₃, 50% glycerol.

[STORAGE]

Store at 4°C for frequent use. Stored at -20°C to -80°C in a manual defrost freezer for one year without detectable loss of activity. Avoid repeated freeze-thaw cycles.