

MAA156Hu21

Monoclonal Antibody to Carbohydrate Antigen 19-9 (CA19-9)

Organism Species: Homo sapiens (Human)

Instruction manual

FOR IN VITRO USE AND RESEARCH USE ONLY
NOT FOR USE IN CLINICAL DIAGNOSTIC PROCEDURES

[**PRODUCT INFORMATION**]

Immunogen: CA19-9, Human

Clonality: Monoclonal

Clone number: C4

Host: Mouse

Immunoglobulin Type: IgG

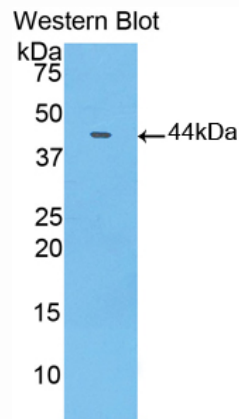
Purification: Affinity Chromatography.

Applications: WB, ICC, IHC-P, IHC-F, ELISA

Concentration: 500µg/mL

UOM: 200µg

9th Edition (Revised in Jul, 2013)



Sample: Recombinant CA19-9, Human

[**IMMUNOGEN INFORMATION**]

Immunogen: Recombinant CA19-9 (Arg35~Thr361) expressed in *E. coli*.

Accession No.: RPA156Hu01

Sequence: The target protein is fused with N-terminal His-Tag and its sequence is listed below.

MGHHHHHSGSEF-RVSRDD ATGSPRAPSG SSRQDTPTR PTLILLWTW PFHIPVALSR
CSEMVPGTAD CHITADRVVY PQADTVIVHH WDIMSNPKSR LPPSPRPQQG
RWIWFNLEPP PNCQHLEALD RYFNLTMSYR SDSLIFTPYG WLEPWSGQPA HPPLNLSAKT
ELVAWAVSNW KPDSARVRY Y QSLQAHLKVD VYGRSHKPLP KGTMMETLSR
YKFYLAFENS LHPDYITEKL WRNALEAWAV PVLGPSRSN YERFLPPDAF IHVDDFQSPK
DLARYLQELD KDHARYLSYF RWRETLRPRS FSWALDFCKA CWKLQQESRY
QTVRSIAAWF T

[ANTIBODY SPECIFICITY]

The antibody is a mouse monoclonal antibody raised against CA19-9. It has been selected for its ability to recognize CA19-9 in immunohistochemical staining and western blotting.

[APPLICATIONS]

Western blotting: 1:100-400

Immunocytochemistry in formalin fixed cells: 1:100-500

Immunohistochemistry in formalin fixed frozen section: 1:100-500

Immunohistochemistry in paraffin section: 1:50-200

Enzyme-linked Immunosorbent Assay: 1:100-200

Optimal working dilutions must be determined by end user.

[CONTENTS]

Form & Buffer: Supplied as solution form in PBS, pH7.4, containing 0.02% NaN₃, 50% glycerol.

[STORAGE]

Store at 4°C for frequent use. Stored at -20°C to -80°C in a manual defrost freezer for one year without detectable loss of activity. Avoid repeated freeze-thaw cycles.