

**MAA133Ca21**

**Monoclonal Antibody to Tumor Necrosis Factor Alpha (TNFa)**

**Organism Species: Canis familiaris; Canine (Dog)**

***Instruction manual***

FOR IN VITRO USE AND RESEARCH USE ONLY  
NOT FOR USE IN CLINICAL DIAGNOSTIC PROCEDURES

9th Edition (Revised in Jul, 2013)

## [ **PRODUCT INFORMATION** ]

**Immunogen:** TNFa, Canine

**Clonality:** Monoclonal

**Host:** Mouse

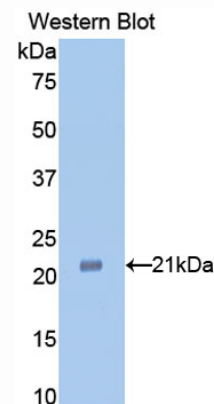
**Immunoglobulin Type:** IgG

**Purification:** Affinity Chromatography.

**Applications:** WB, ICC, IHC-P, IHC-F, ELISA

**Concentration:** 500µg/mL

**UOM:** 200µg



*Sample: Recombinant TNFa, Canine*

## [ **IMMUNOGEN INFORMATION** ]

**Immunogen:** Recombinant TNFa (Leu63~Leu233) expressed in *E.coli*.

**USCN Accession No.:** RPA133Ca01

**Sequence:** The target protein is fused with N-terminal His-Tag and its sequence is listed below.

MGHHHHHSGSEF-LPNGLQLI SPLAQTVKSS SRTPSDKPVA HVVANPEAEG  
QLQWLSRRAN ALLANGVELT DNQLIVPSDG LYLIYSQVLF KGQGCPSTHV LLTHTISRFA  
VSYQTKVNLL SAIKSPCQRE TPEGTEAKPW YEPIYLGGVF QLEKGDRLSA EINLPNYLDF  
AESGQVYFGI IAL

## **[ ANTIBODY SPECIFICITY ]**

The antibody is a mouse monoclonal antibody raised against TNF $\alpha$ . It has been selected for its ability to recognize TNF $\alpha$  in immunohistochemical staining and western blotting.

## **[ APPLICATIONS ]**

Western blotting: 1:100-400

Immunocytochemistry in formalin fixed cells: 1:100-500

Immunohistochemistry in formalin fixed frozen section: 1:100-500

Immunohistochemistry in paraffin section: 1:50-200

Enzyme-linked Immunosorbent Assay: 1:100-200

Optimal working dilutions must be determined by end user.

## **[ CONTENTS ]**

**Form & Buffer:** Supplied as solution form in PBS, pH7.4, containing 0.02% NaN<sub>3</sub>, 50% glycerol.

## **[ STORAGE ]**

Store at 4°C for frequent use. Stored at -20°C to -80°C in a manual defrost freezer for one year without detectable loss of activity. Avoid repeated freeze-thaw cycles.