

MAA049Rb21

Monoclonal Antibody to Interferon Gamma (IFN γ)
Organism Species: *Oryctolagus cuniculus* (Rabbit)

Instruction manual

FOR IN VITRO USE AND RESEARCH USE ONLY
NOT FOR USE IN CLINICAL DIAGNOSTIC PROCEDURES

9th Edition (Revised in Jul, 2013)

[PRODUCT INFORMATION]

Immunogen: IFN γ , rabbit

Clonality: Monoclonal

Clone number: C7

Host: Mouse

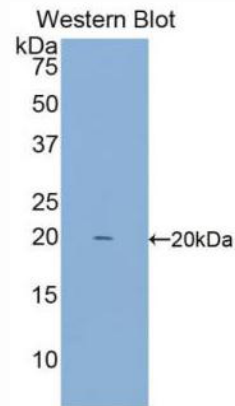
Immunoglobulin Type: IgG

Purification: Affinity Chromatography.

Applications: WB, ICC, IHC-P, IHC-F, ELISA

Concentration: 500 μ g/mL

UOM: 200 μ g



Sample: Recombinant IFN γ , rabbit

[IMMUNOGEN INFORMATION]

Immunogen: Recombinant IFN γ (Gln24~Tyr167) expressed in *E.coli*.

Accession No.: RPA049Rb01

Sequence: The target protein is fused with N-terminal His-Tag and its sequence is listed below.

MGHHHHHSGSEF-QDTLTRE TEHLKAYLKA NTSDVANGGP LFLNILRNWK EESDNKIIQS
QIVSFYFKLF DNLKDHEVIK KSMESIKEDI FVKFFNSNLT KMDDFQNLTR ISVDDRLVQR
KAVSELSNVL NFLSPKSNLK KRKRSQTLFR GRRASKY

[ANTIBODY SPECIFICITY]

The antibody is a mouse monoclonal antibody raised against IFN γ . It has been selected for its ability to recognize IFN γ in immunohistochemical staining and western blotting.

[APPLICATIONS]

Western blotting: 1:100-400

Immunocytochemistry in formalin fixed cells: 1:100-500

Immunohistochemistry in formalin fixed frozen section: 1:100-500

Immunohistochemistry in paraffin section: 1:50-200

Enzyme-linked Immunosorbent Assay: 1:100-200

Optimal working dilutions must be determined by end user.

[CONTENTS]

Form & Buffer: Supplied as solution form in PBS, pH7.4, containing 0.02% NaN₃, 50% glycerol.

[STORAGE]

Store at 4°C for frequent use. Stored at -20°C to -80°C in a manual defrost freezer for one year without detectable loss of activity. Avoid repeated freeze-thaw cycles.