

**MAA049Ga21****Monoclonal Antibody to Interferon Gamma (IFNg)****Organism Species: Chicken (Gallus)*****Instruction manual***

FOR IN VITRO USE AND RESEARCH USE ONLY

NOT FOR USE IN CLINICAL DIAGNOSTIC PROCEDURES

10th Edition (Revised in Jan, 2014)

**[ PRODUCT INFORMATION ]****Immunogen:** IFNg, Gallus**Clonality:** Monoclonal**Clone number:** C4**Host:** Mouse**Immunoglobulin Type:** IgG1 Kappa**Purification:** Affinity Chromatography.**Applications:** WB, ICC, IHC-P, IHC-F, ELISA**Concentration:** 500µg/mL**UOM:** 200µg**[ IMMUNOGEN INFORMATION ]****Immunogen:** Recombinant IFNg (His20~Cys164) with N-terminal His-Tag expressed in *E.coli*.**Accession No.:** RPA049Ga01**[ ANTIBODY SPECIFICITY ]**

The antibody is a mouse monoclonal antibody raised against IFNg. It has been selected for its ability to recognize IFNg in immunohistochemical staining and western blotting.

**[ APPLICATIONS ]**

Western blotting: 1:100-400

Immunocytochemistry in formalin fixed cells: 1:100-500

Immunohistochemistry in formalin fixed frozen section: 1:100-500

Immunohistochemistry in paraffin section: 1:50-200

Enzyme-linked Immunosorbent Assay: 1:100-200

Optimal working dilutions must be determined by end user.

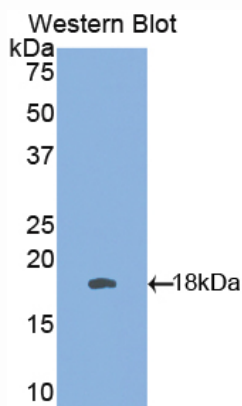
## [ CONTENTS ]

**Form & Buffer:** Supplied as solution form in PBS, pH7.4, containing 0.02% NaN<sub>3</sub>, 50% glycerol.

## [ STORAGE ]

Store at 4°C for frequent use. Stored at -20°C to -80°C in a manual defrost freezer for one year without detectable loss of activity. Avoid repeated freeze-thaw cycles.

## [ IMAGES ]



Used in Western Blot, Sample:  
**Recombinant IFN $\gamma$ , Gallus**