

MAA017Hu22

Monoclonal Antibody to Cadherin, Epithelial (CDHE)

Organism Species: Homo sapiens (Human)

Instruction manual

FOR IN VITRO USE AND RESEARCH USE ONLY
NOT FOR USE IN CLINICAL DIAGNOSTIC PROCEDURES

[PRODUCT INFORMATION]

Immunogen: CDHE, Human

Clonality: Monoclonal

Clone number: H3

Host: Mouse

Immunoglobulin Type: IgG

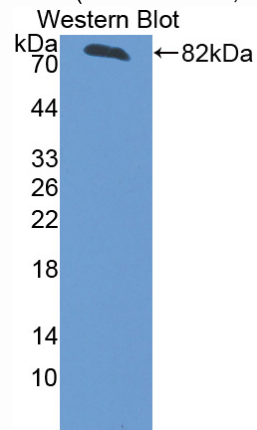
Purification: Affinity Chromatography.

Applications: WB, ICC, IHC-P, IHC-F, ELISA

Concentration: 500µg/mL

UOM: 200µg

9th Edition (Revised in Jul, 2013)



Sample: Recombinant CDHE, Human

[IMMUNOGEN INFORMATION]

Immunogen: Recombinant CDHE (Asp155~Asp882) expressed in *E.coli*.

Accession No.: RPA017Hu01

Sequence: The target protein is fused with N-terminal His-Tag and its sequence is listed below.

MGHHHHHHSQSEFELRRQAC- DWVIPP ISCPENEKGP FPKNLVQIKS NKDKEGKVFY
SITGQGADTP PVGVFIIERE TGWLKVTEPL DRERIATYTL FSHAVSSNGN AVEDPMEILI
TVTQNDNKP EFTQEVFKGS VMEGALPGTS VMEVTATDAD DDVNTYNAAI AYTILSQDPE
LPDKNMFTIN RNTGVISVVT TGLDRESFPT YTLVVQAADL QGEGSTTAT AVITVTDND
NPPIFNPTY KGQVPENEAN VVITTLKVTD ADAPNTPAWE AVYTI LNDGQ GQFVTTNPV
NNDGILKTAK GLDFEAKQQY ILHVAVTNVV PFEVSLTST ATVTVDVLDV NEAPIFVPE
KRVESEDFG VGQEITSYTA QEPDTFMEQK ITYRIWRDTA NWLEINPDTG AISTRAELDR
EDFEHVKNST YTALIIATDN GSPVATGTGT LLLILSDVND NAPIPEPRTI FFCERNPKPQ

VINIIDADLP PNTSPFTAEL THGASANWTI QYNDPTQESI ILKPKMALEV GDYKINLKLM
DNQNKDQVTT LEVSVCDCEG AAGVCRKAQP VEAGLQIPAI LGILGGILAL LILILLLLLF
LRRRAVVKEP LLPPEDDTRD NVYYYDEEGG GEEDQDFDLS QLHRGLDARP
EVTRNDVAPT LMSVPRYLPR PANPDEIGNF IDENLKAADT DPTAPPYDSL LVFDYEGSGS
EAASLSSLNS SESDKDQDYD YLNEWGNRFK KLADMYGGGE DD

[ANTIBODY SPECIFICITY]

The antibody is a mouse monoclonal antibody raised against CDHE. It has been selected for its ability to recognize CDHE in immunohistochemical staining and western blotting.

[APPLICATIONS]

Western blotting: 1:100-400

Immunocytochemistry in formalin fixed cells: 1:100-500

Immunohistochemistry in formalin fixed frozen section: 1:100-500

Immunohistochemistry in paraffin section: 1:50-200

Enzyme-linked Immunosorbent Assay: 1:100-200

Optimal working dilutions must be determined by end user.

[CONTENTS]

Form & Buffer: Supplied as solution form in PBS, pH7.4, containing 0.02% NaN₃, 50% glycerol.

[STORAGE]

Store at 4°C for frequent use. Stored at -20°C to -80°C in a manual defrost freezer for one year without detectable loss of activity. Avoid repeated freeze-thaw cycles.