

MAA002Hu22

Monoclonal Antibody to Activated Leukocyte Cell Adhesion Molecule (ALCAM)

Organism Species: Homo sapiens (Human)

Instruction manual

FOR IN VITRO USE AND RESEARCH USE ONLY

NOT FOR USE IN CLINICAL DIAGNOSTIC PROCEDURES

9th Edition (Revised in Jul, 2013)

[PRODUCT INFORMATION]

Immunogen: ALCAM, Human

Clonality: Monoclonal

Clone number: A5

Host: Mouse

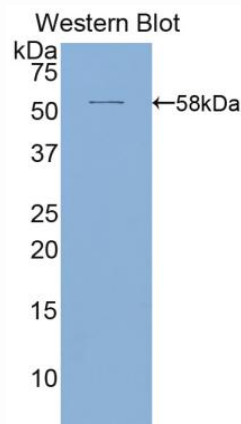
Immunoglobulin Type: IgG

Purification: Affinity Chromatography.

Applications: WB, ICC, IHC-P, IHC-F, ELISA

Concentration: 500µg/mL

UOM: 200µg



Sample: Recombinant ALCAM, Human

[IMMUNOGEN INFORMATION]

Immunogen: Recombinant ALCAM (Trp28~Lys527) expressed in *E.coli*.

Accession No.: RPA002Hu01

Sequence: The target protein is fused with N-terminal His-Tag and its sequence is listed below.

MGHHHHHHSQSEF-WYT VNSAYGDTII IPCRLDVPQN LMFGKWYKYEK PDGSPVFIAP
RSSTKKSQVY DDVPEYKDR L NLSNYTSLI SNARISDEKR FVCM LVTEDN VFEAPTIVKV
FKQPSKPEIV SKALFLETEQ LKKLGDCISE DSYPDGNITW YRNGKVLHPL EGAVVIIFKK
EMDPVTQLYT MTSTLEYKTT KADIQMPFTC SVTYYGPSGQ KTIHSEQAVF DIYYPTQV T
IQVLPKNAI KEGDNITLKC LGNGNPPPEE FLFYLPQPE GIRSSNTYTL TDVRRNATGD
YKCSLIDKKS MIASTAITVH YLDLSLNPSG EVTRQIGDAL PVSCTISASR NATVVMKDN

IRLRSSPSFS SLHYQDAGNY VCETALQEVE GLKKRESLTL IVEGKPKQIKM TKKTDPSGLS
KTIICHVEGF PKPAIQWTIT GSGSVINQTE ESPYINGRYY SKIIISPEEN VTLTCTAENQ
LERTVNSLNV SAISIPEHDE ADEISDENRE KVNDQAK

[ANTIBODY SPECIFICITY]

The antibody is a mouse monoclonal antibody raised against ALCAM. It has been selected for its ability to recognize ALCAM in immunohistochemical staining and western blotting.

[APPLICATIONS]

Western blotting: 1:100-400

Immunocytochemistry in formalin fixed cells: 1:100-500

Immunohistochemistry in formalin fixed frozen section: 1:100-500

Immunohistochemistry in paraffin section: 1:50-200

Enzyme-linked Immunosorbent Assay: 1:100-200

Optimal working dilutions must be determined by end user.

[CONTENTS]

Form & Buffer: Supplied as solution form in PBS, pH7.4, containing 0.02% NaN₃, 50% glycerol.

[STORAGE]

Store at 4°C for frequent use. Stored at -20°C to -80°C in a manual defrost freezer for one year without detectable loss of activity. Avoid repeated freeze-thaw cycles.